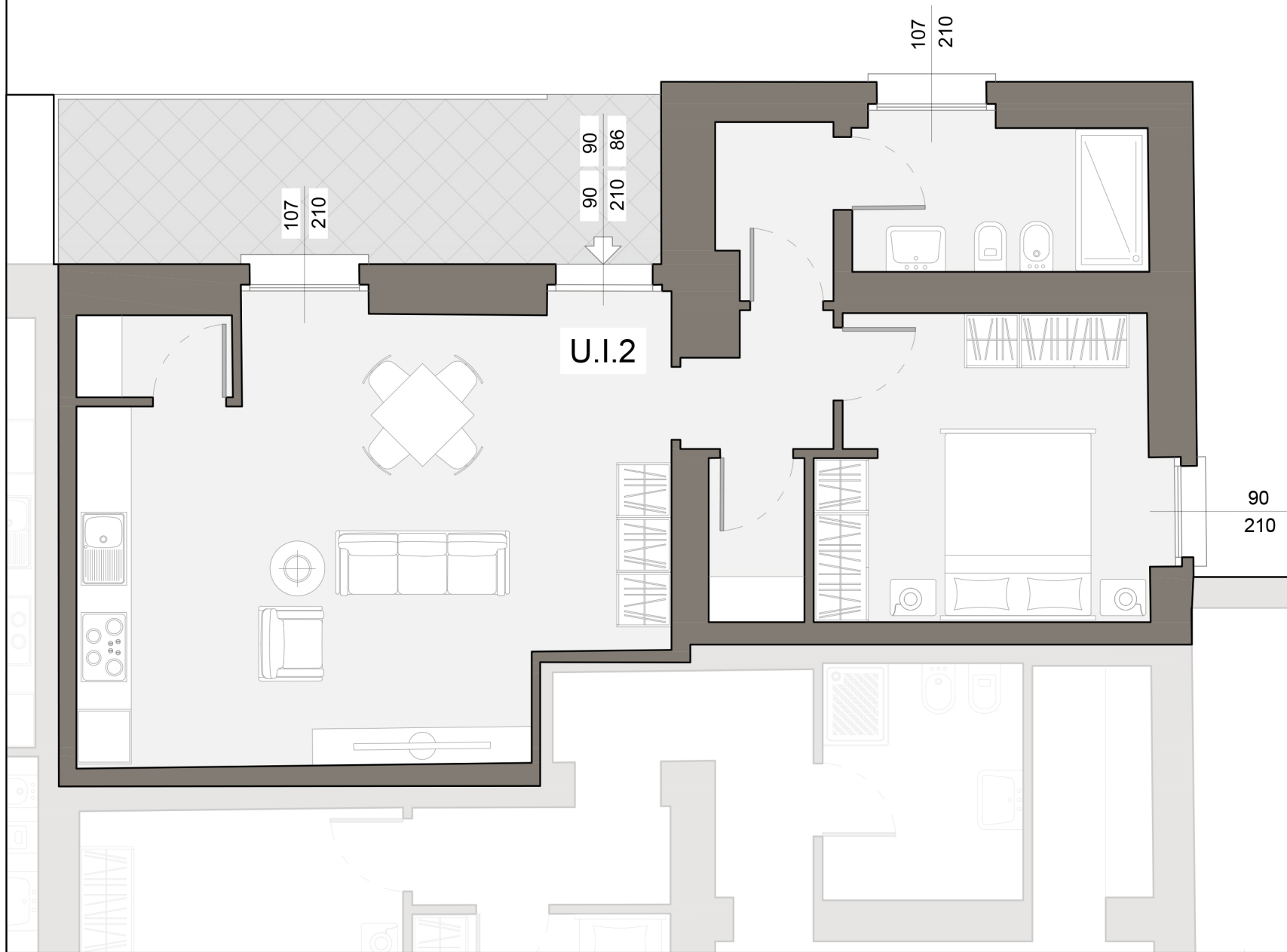
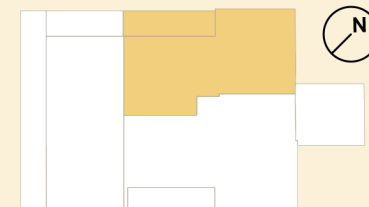


VIA VARE'

U.I. 02

PIANO TERRA

NOTE:



	SUPERFICIE RILEVATA	COEFFICIENTE	SUPERFICIE COMMERCIALE
Abitazione	69.83	100%	69.83
Area esterna	38.36	33%	12.66
TOTALE			82.49
Parti comuni		5%	4.12
TOTALE SUPERFICIE COMMERCIALE			86.61